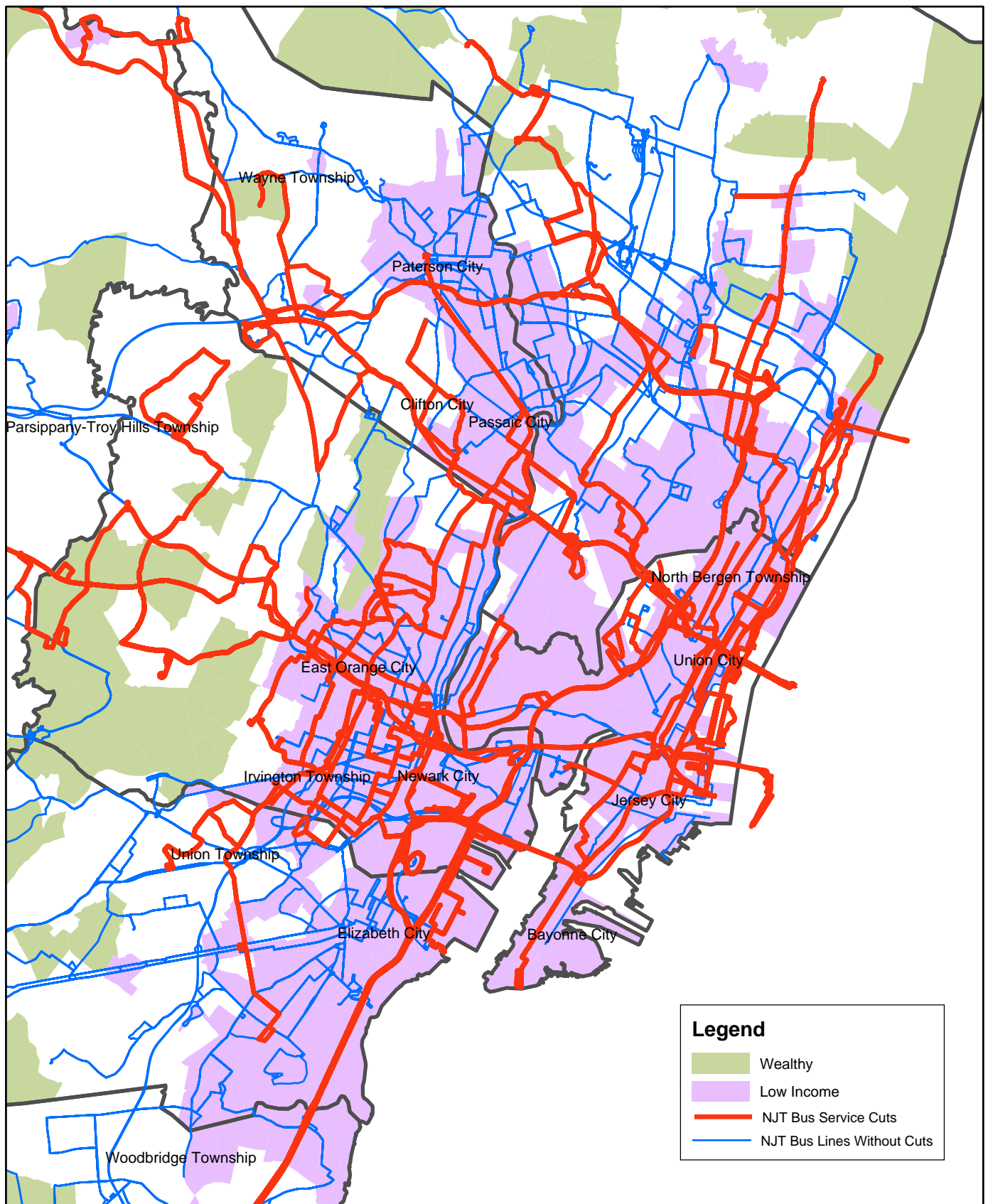
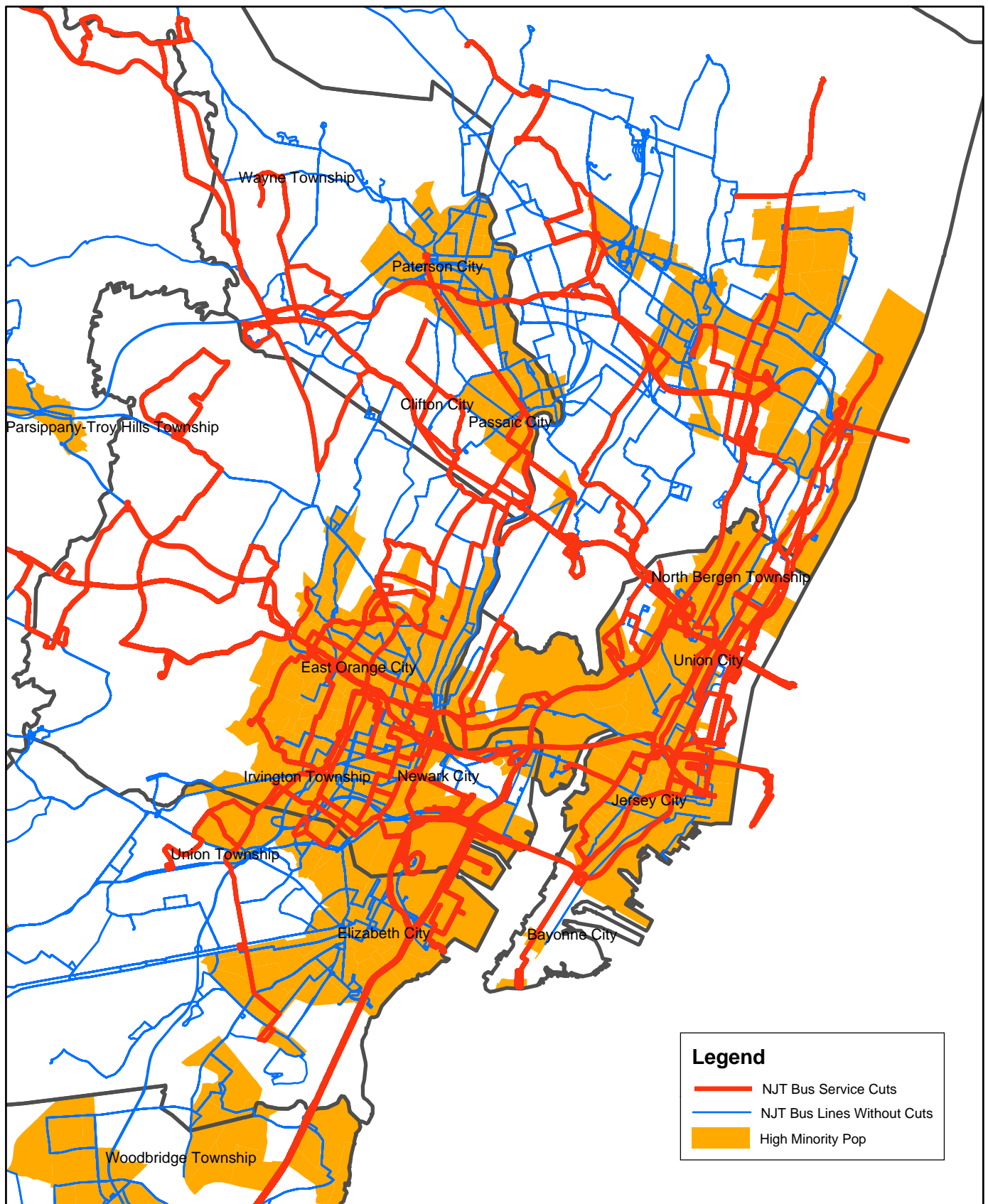


Proposed NJT Bus Service Cuts by Income



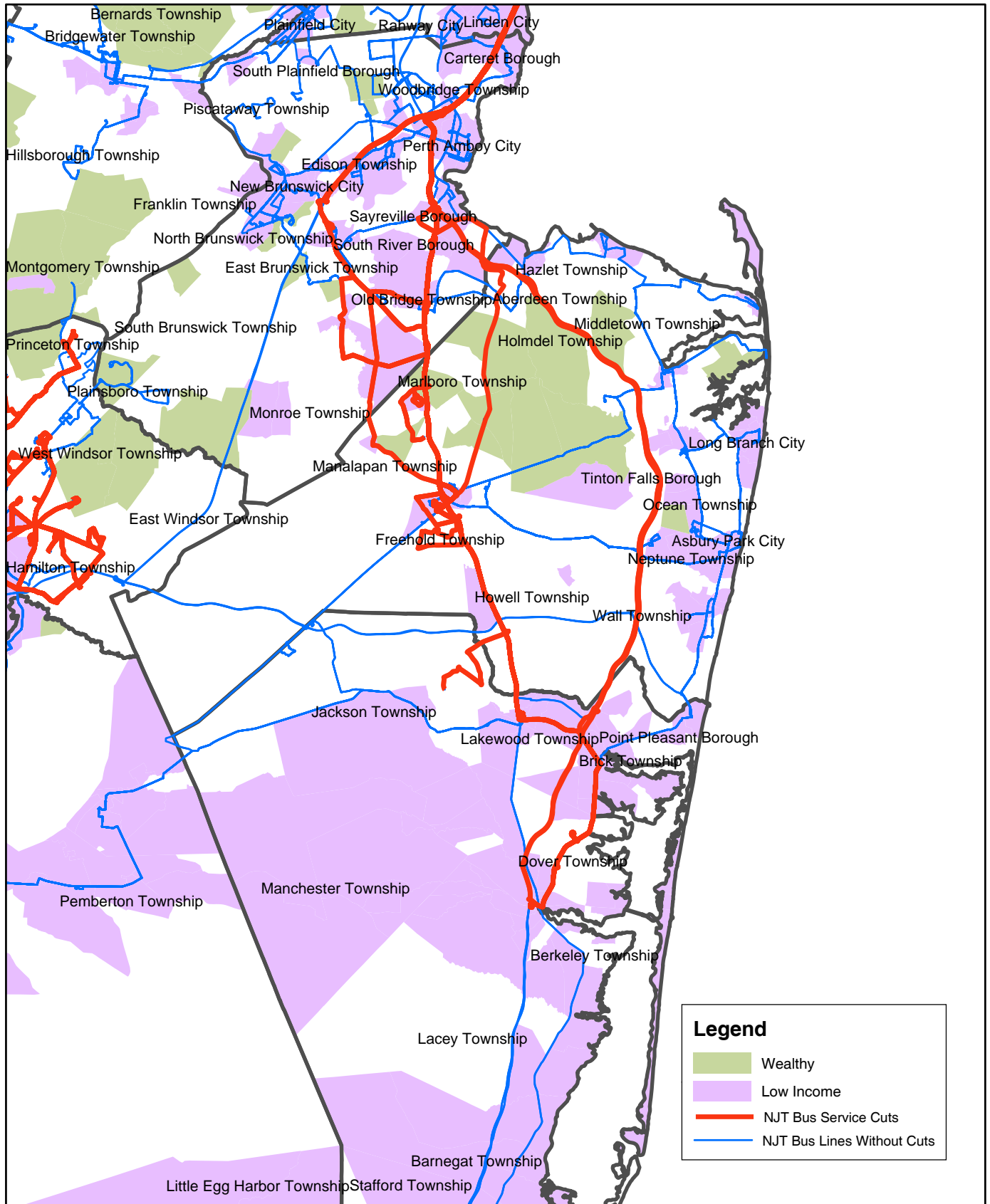
Data source: U.S. Census Bureau, 2000 Decennial Census and NJ TRANSIT GIS data.
Wealthy defined as Census Tracts with 50% or more of households having median annual income of \$100,000 or greater.
Low income defined as Census Tracts with median annual income less than \$57,565.

Proposed NJT Bus Service Cuts by Race/Ethnicity



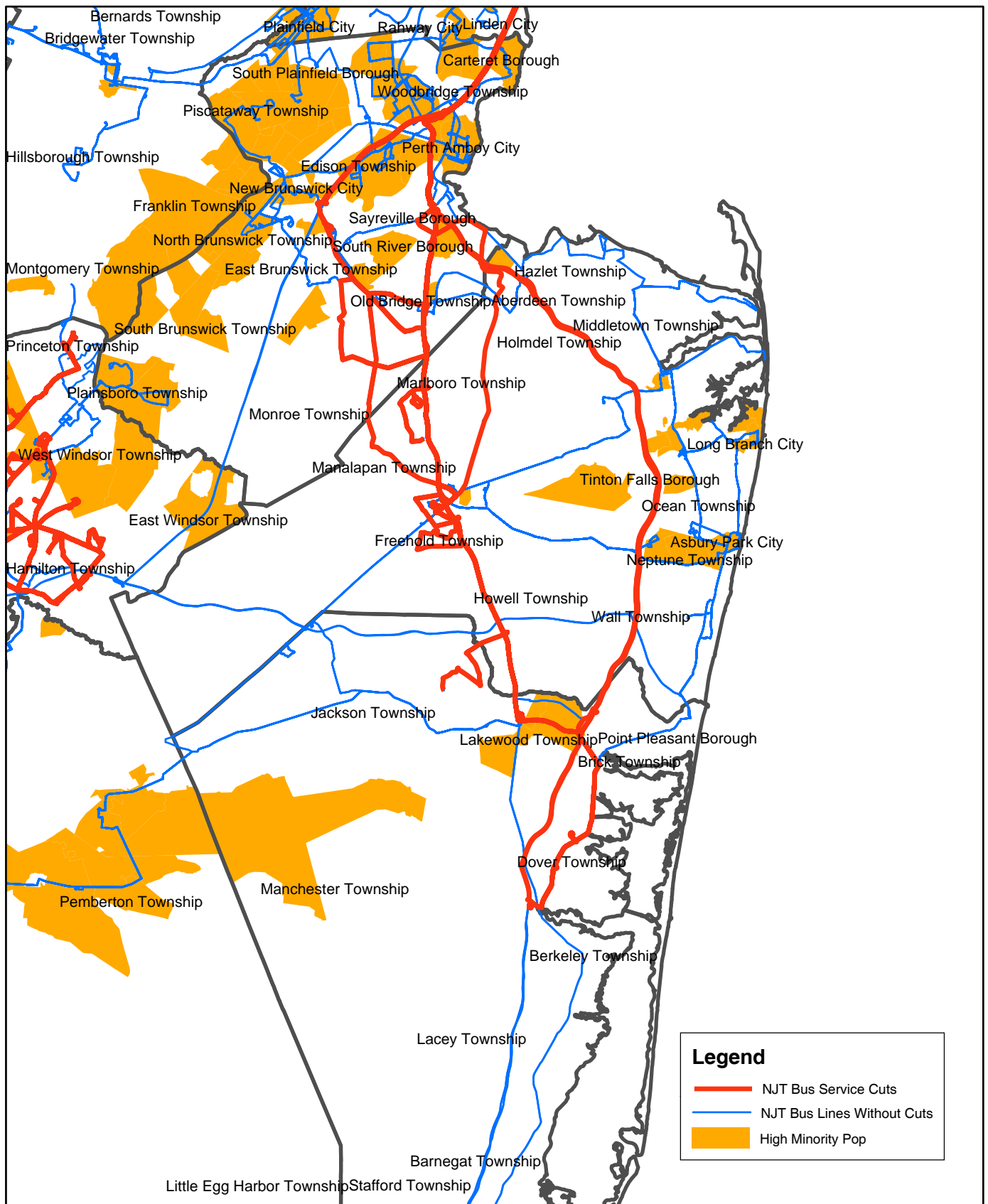
Data source: U.S. Census Bureau, 2000 Decennial Census and NJ TRANSIT GIS data.
High Minority Population defined as Census Tracts with share of non-white population greater than the state average of 27.4%.

Proposed NJT Bus Service Cuts by Income



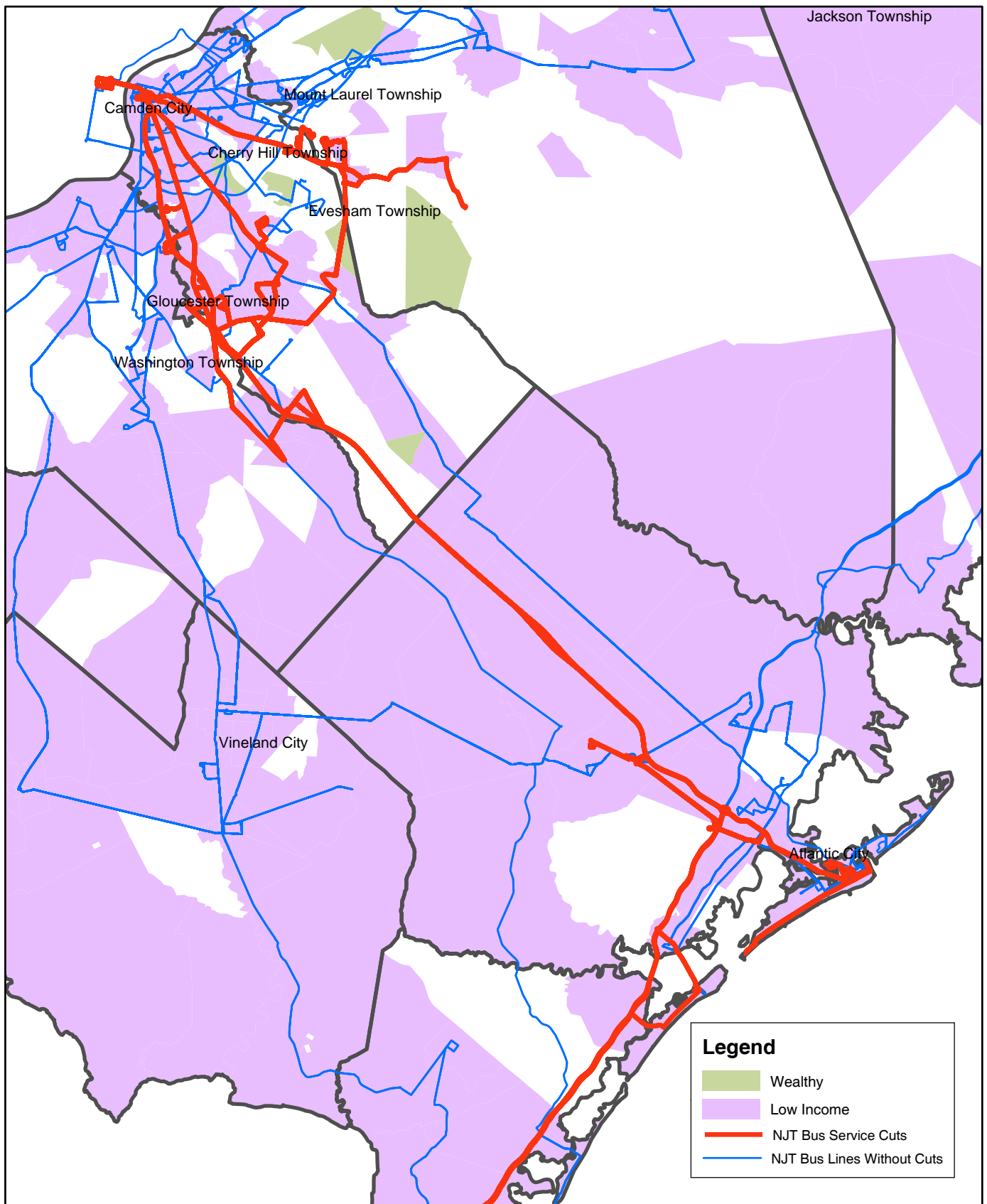
Data source: U.S. Census Bureau, 2000 Decennial Census and NJ TRANSIT GIS data.
 Wealthy defined as Census Tracts with 50% or more of households having median annual income of \$100,000 or greater.
 Low income defined as Census Tracts with median annual income less than \$57,565.

Proposed NJT Bus Service Cuts by Race/Ethnicity



Data source: U.S. Census Bureau, 2000 Decennial Census and NJ TRANSIT GIS data.
 High Minority Population defined as Census Tracts with share of non-white population greater than the state average of 27.4%.

Proposed NJT Bus Service Cuts by Income

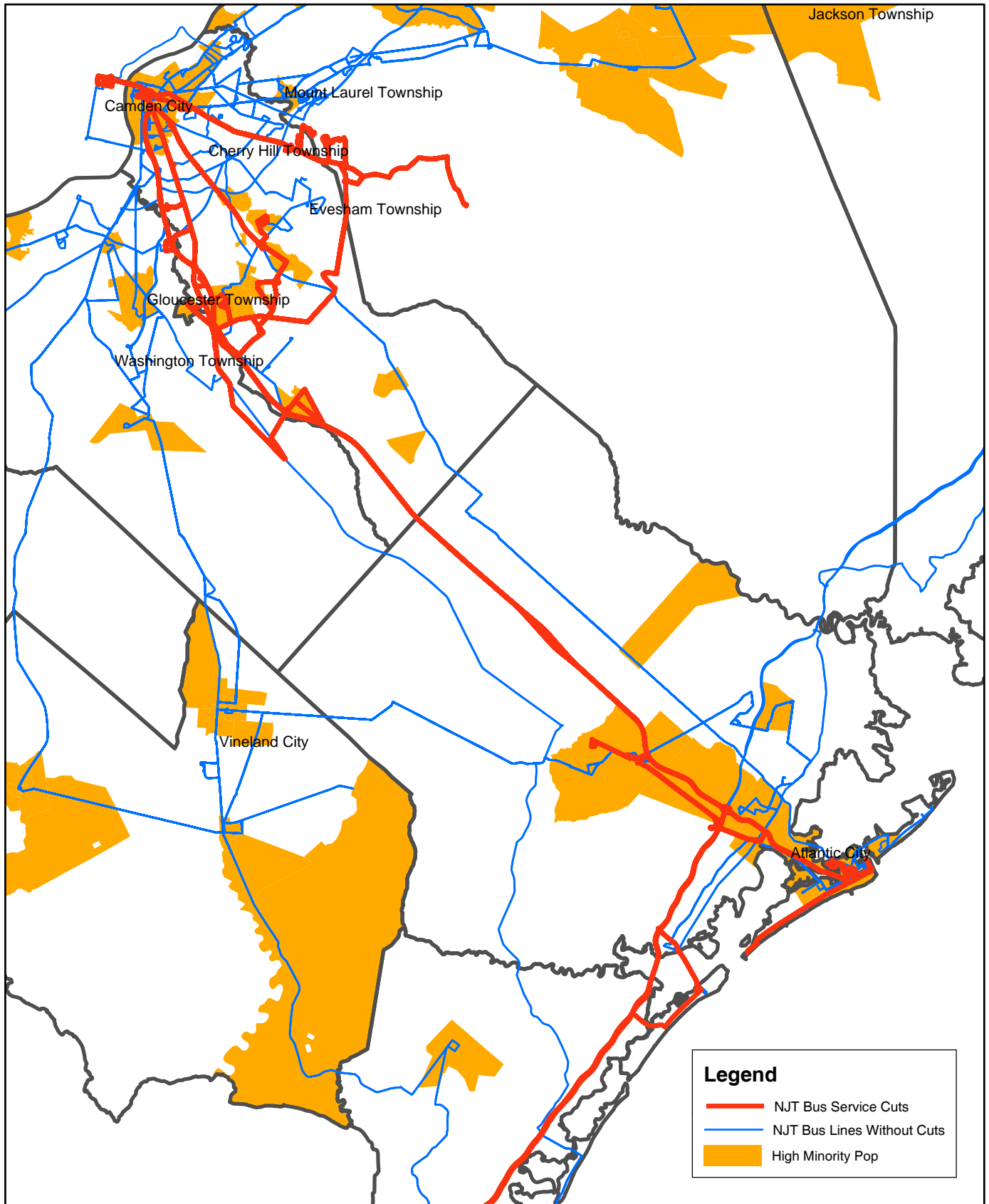


Data source: U.S. Census Bureau, 2000 Decennial Census and NJ TRANSIT GIS data.

Wealthy defined as Census Tracts with 50% or more of households having median annual income of \$100,000 or greater.

Low income defined as Census Tracts with median annual income less than \$57,565.

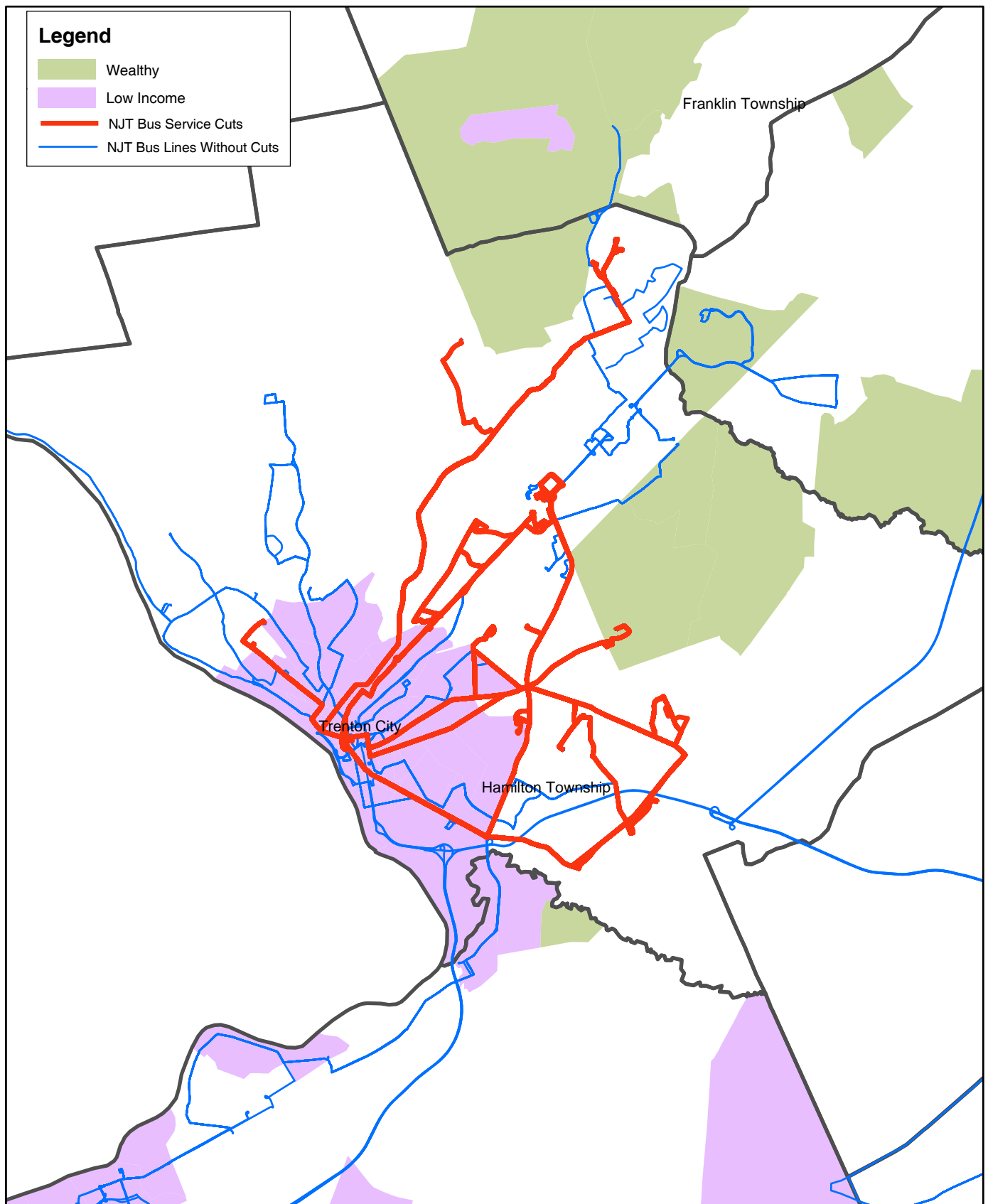
Proposed NJT Bus Service Cuts by Race/Ethnicity



Data source: U.S. Census Bureau, 2000 Decennial Census and NJ TRANSIT GIS data.

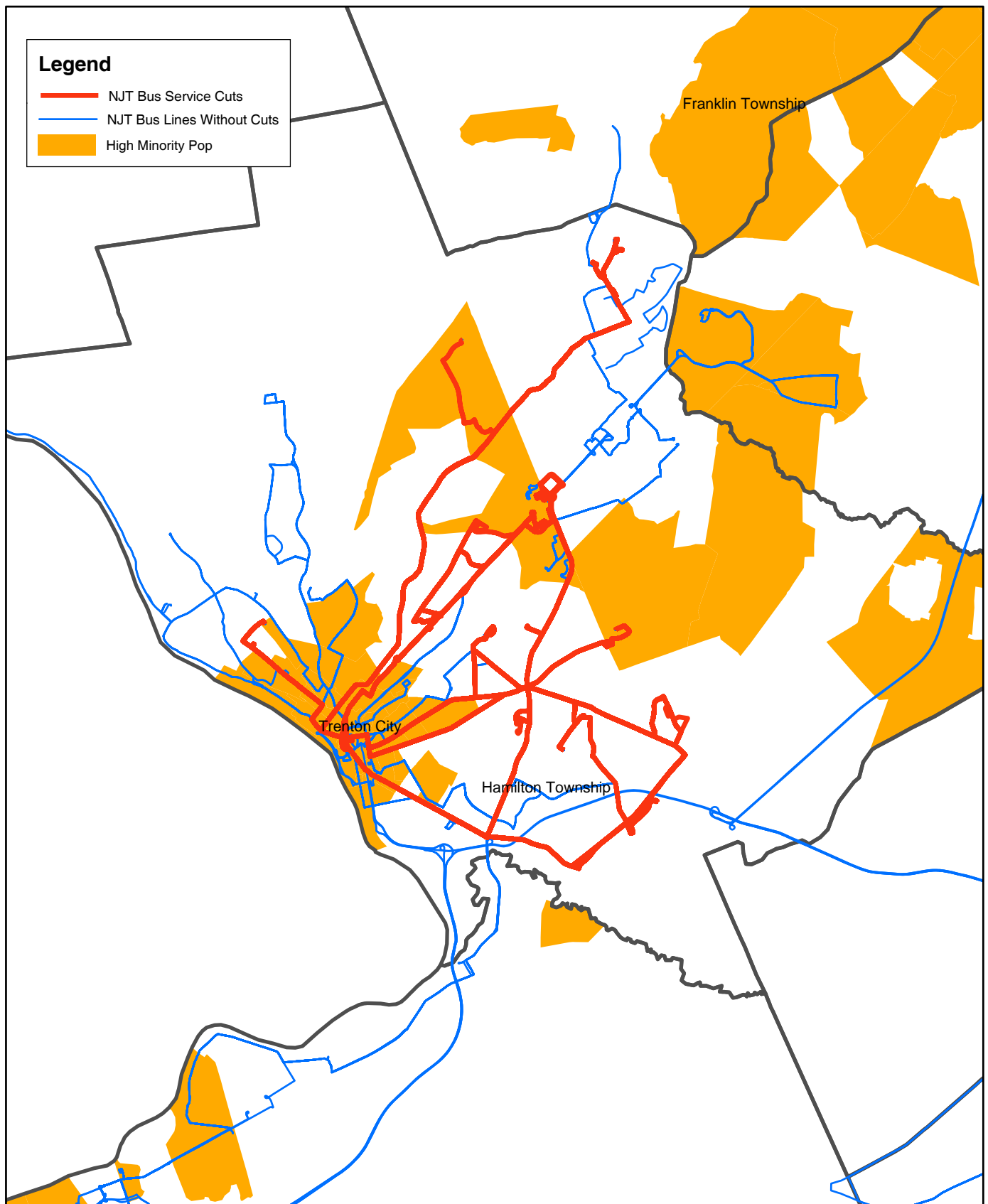
High Minority Population defined as Census Tracts with share of non-white population greater than the state average of 27.4%.

Proposed NJT Bus Service Cuts by Income



Data source: U.S. Census Bureau, 2000 Decennial Census and NJ TRANSIT GIS data.
Wealthy defined as Census Tracts with 50% or more of households having median annual income of \$100,000 or greater.
Low income defined as Census Tracts with median annual income less than \$57,565.

Proposed NJT Bus Service Cuts by Race/Ethnicity



Data source: U.S. Census Bureau, 2000 Decennial Census and NJ TRANSIT GIS data.

High Minority Population defined as Census Tracts with share of non-white population greater than the state average of 27.4%.