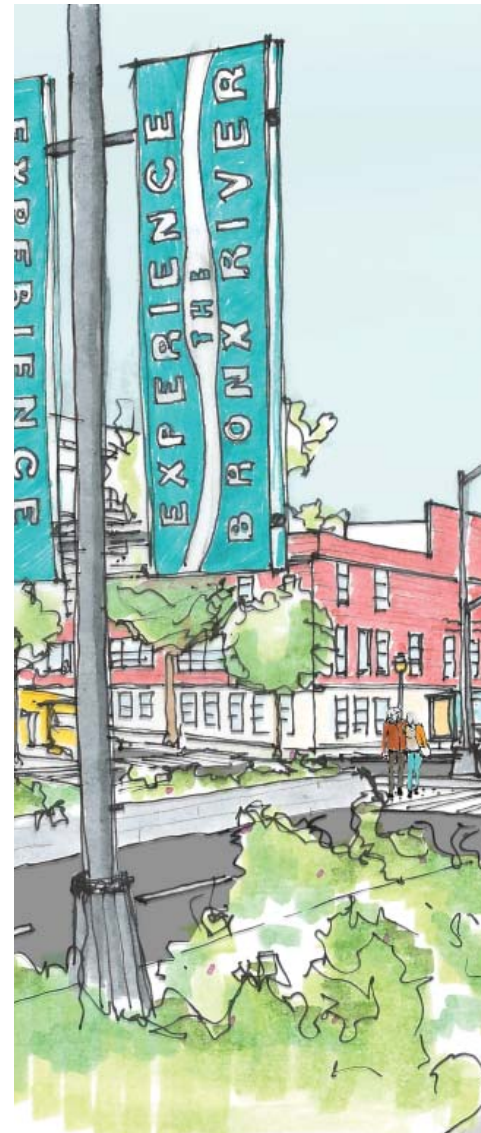


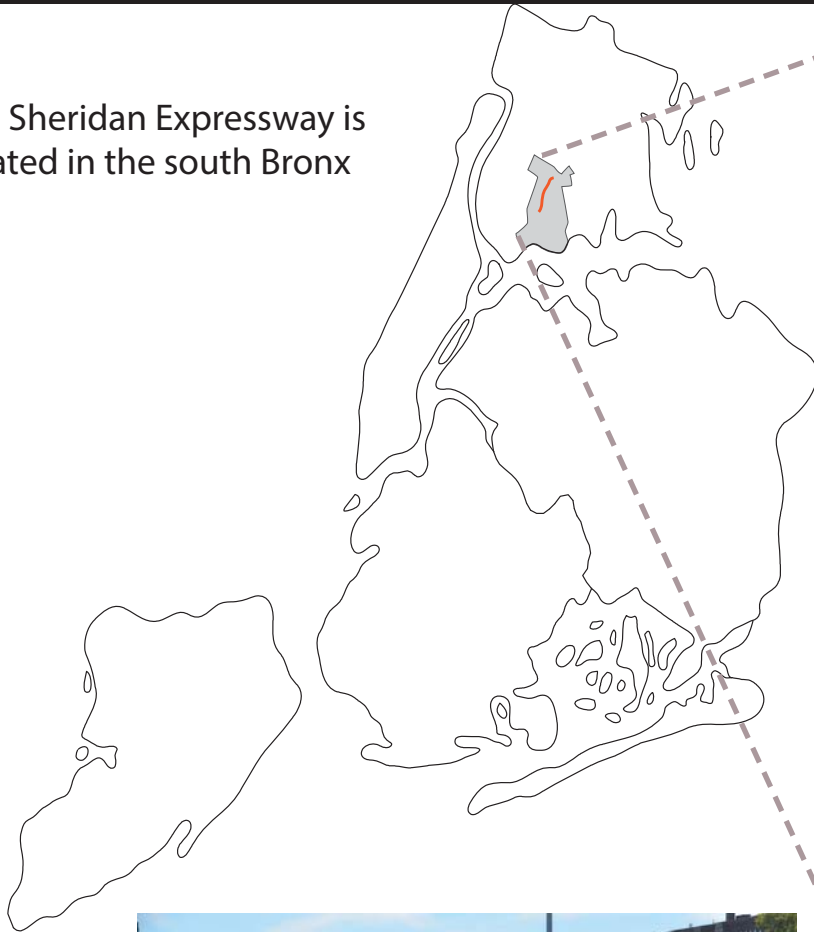
# THE SHERIDAN EXPRESSWAY STUDY

## Reconnecting the Neighborhoods Around the Sheridan Expressway and Improving Access to Hunts Point

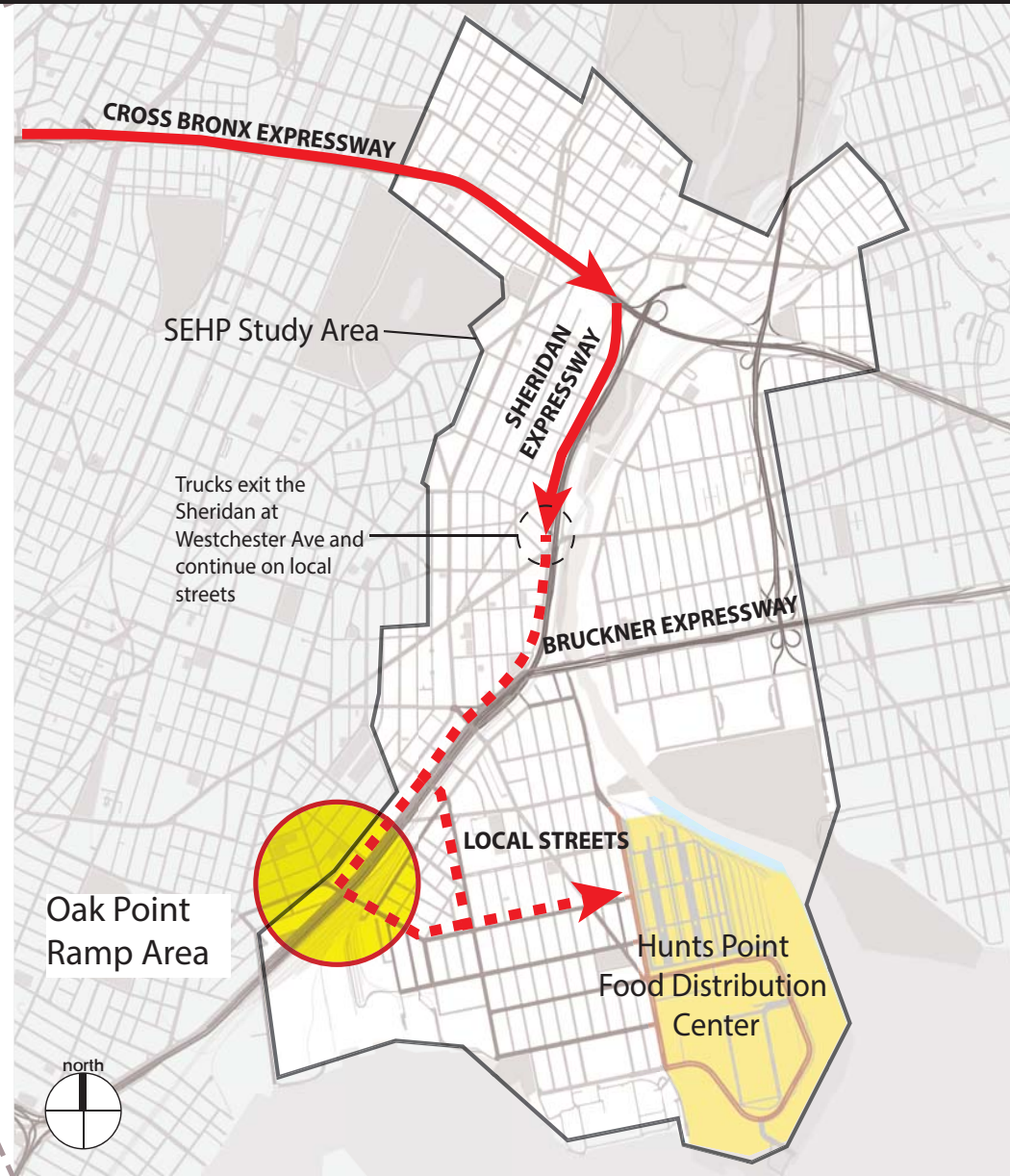


# The Sheridan Expressway Today

The Sheridan Expressway is located in the south Bronx



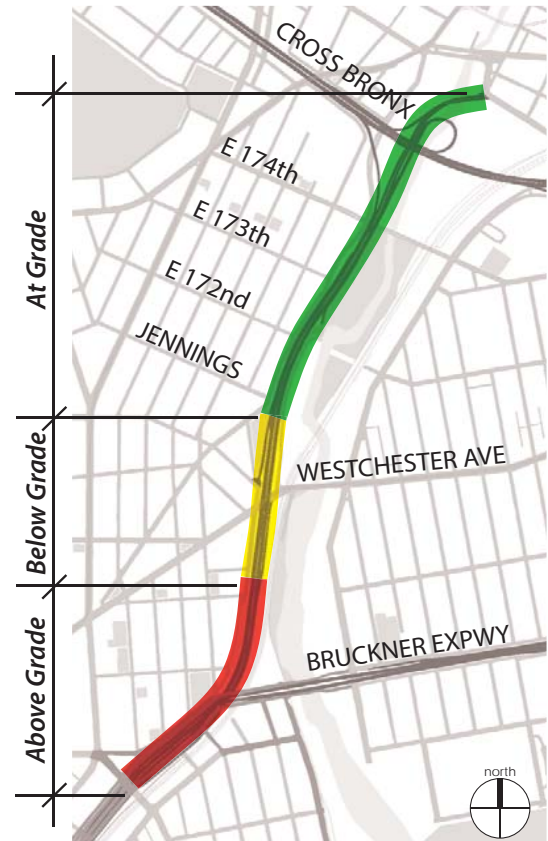
Exit at Westchester Avenue for access to Hunts Point



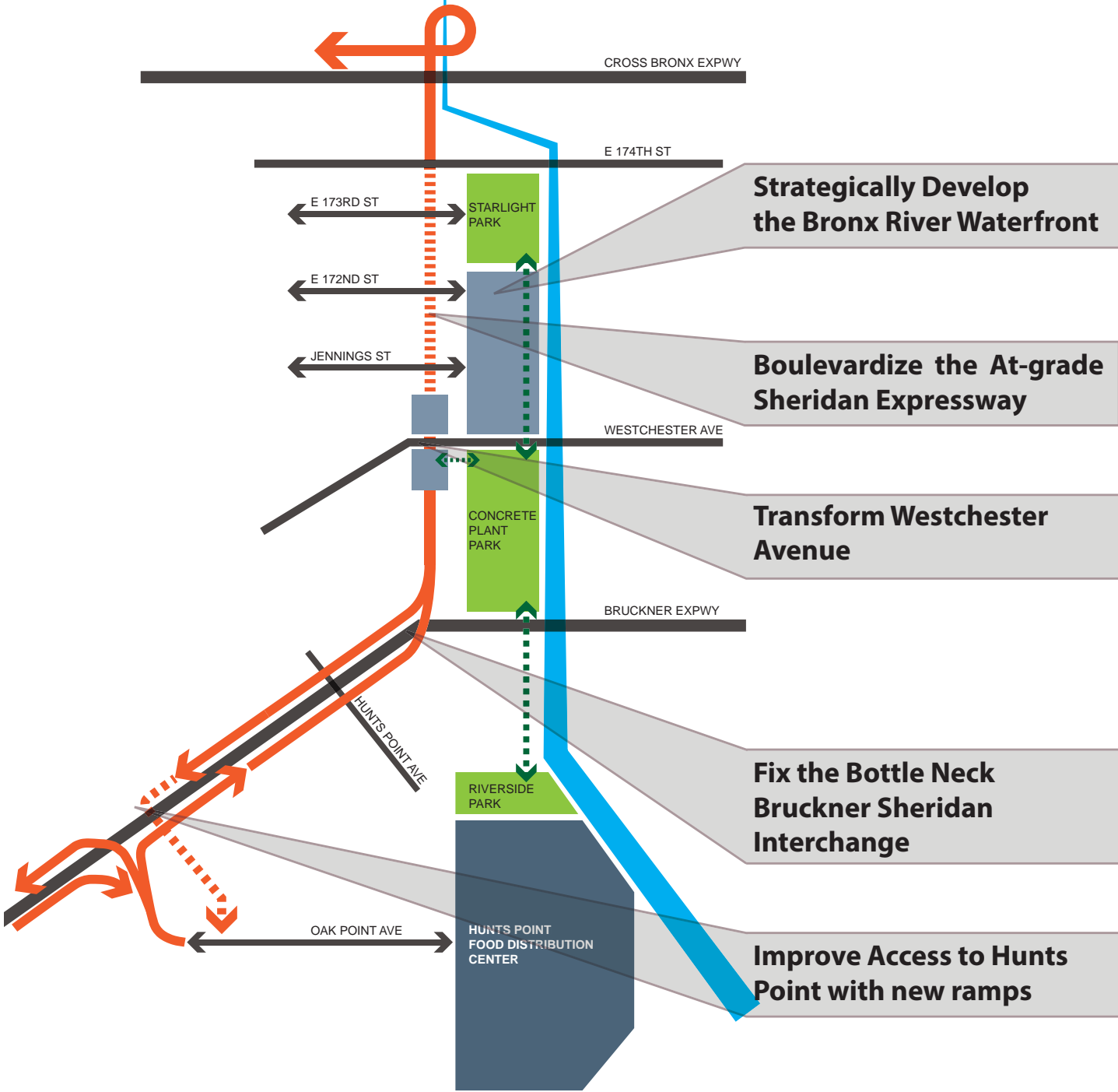
This truck route accounts for **19%** of total truck trips to Hunts Point FDC

# Re-Designing the Sheridan Expressway

Physical conditions of the Sheridan Expressway's 1.2 mile length

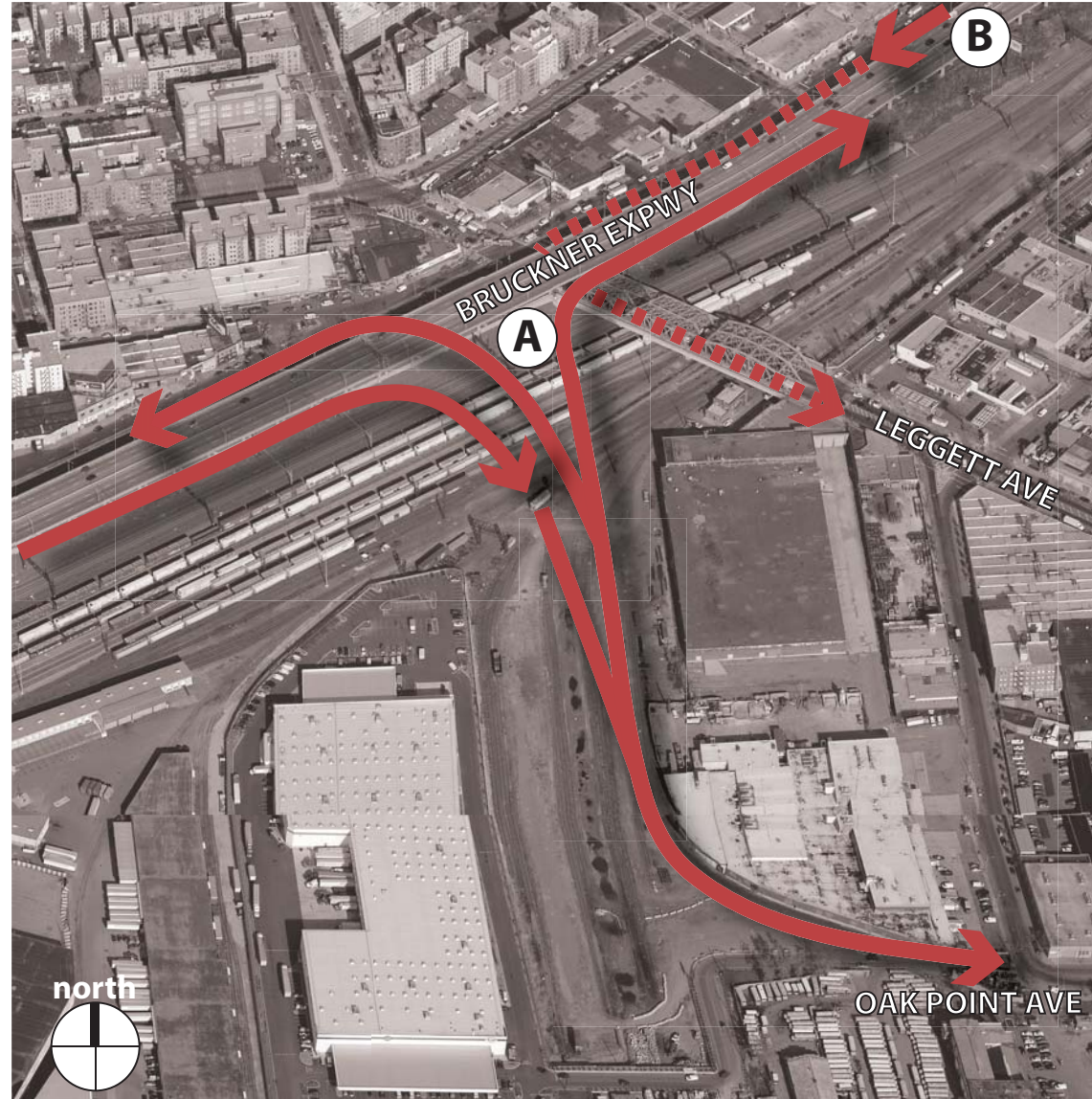
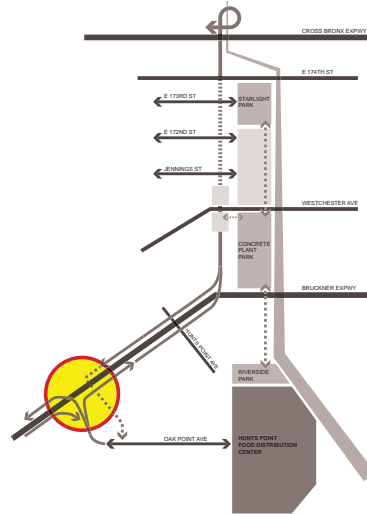


At-Grade



# Ramps at Oak Point

Construction of new ramps to/from the Bruckner Expressway will provide direct vehicle access to the Hunts Point Peninsula.



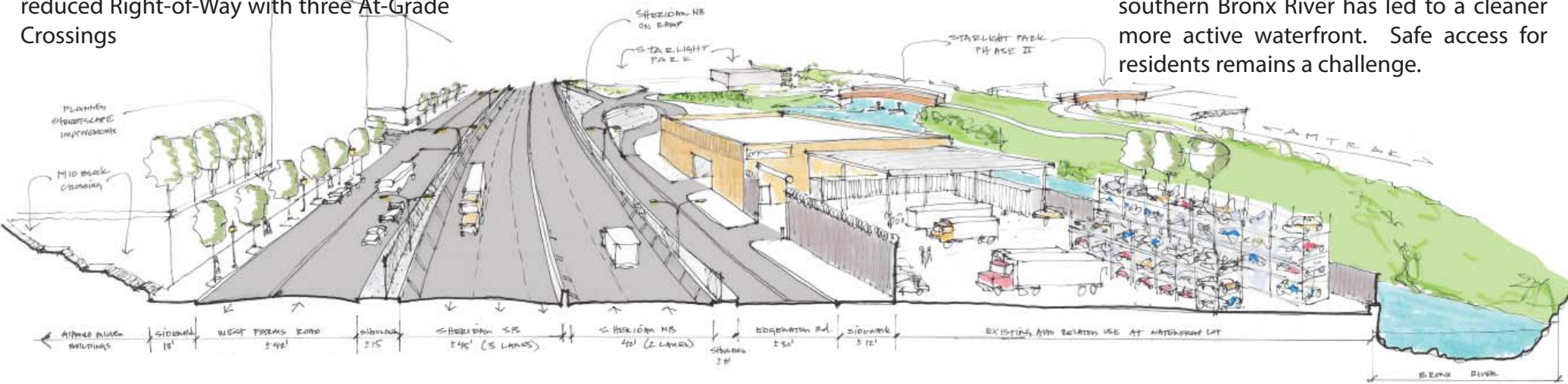
**A** Construct new entry and exit ramps to/from the Bruckner Expressway between Hunts Point Avenue and E138th Street exit, providing vehicles direct access to the Hunts Point peninsula

**B** Vehicles bound for Hunts Point will remain on the Bruckner Expressway removing a significant amount of traffic from Bruckner Boulevard and other local streets

# City's Recommended Boulevard

Roadways are combined allowing for a reduced Right-of-Way with three At-Grade Crossings

\$81 million of public investment along the southern Bronx River has led to a cleaner more active waterfront. Safe access for residents remains a challenge.



LAND

ROAD ± 210'

LAND ± 180'

WATER ± 75'

Residential Zoning West Farms Rd Sheridan Expwy Edgewater Rd Manufacturing Zoning Bronx River

Roadways are combined allowing for a reduced Right-of-Way with three At-Grade Crossings

325,000 square feet of developable waterfront could provide a multitude of uses.



LAND

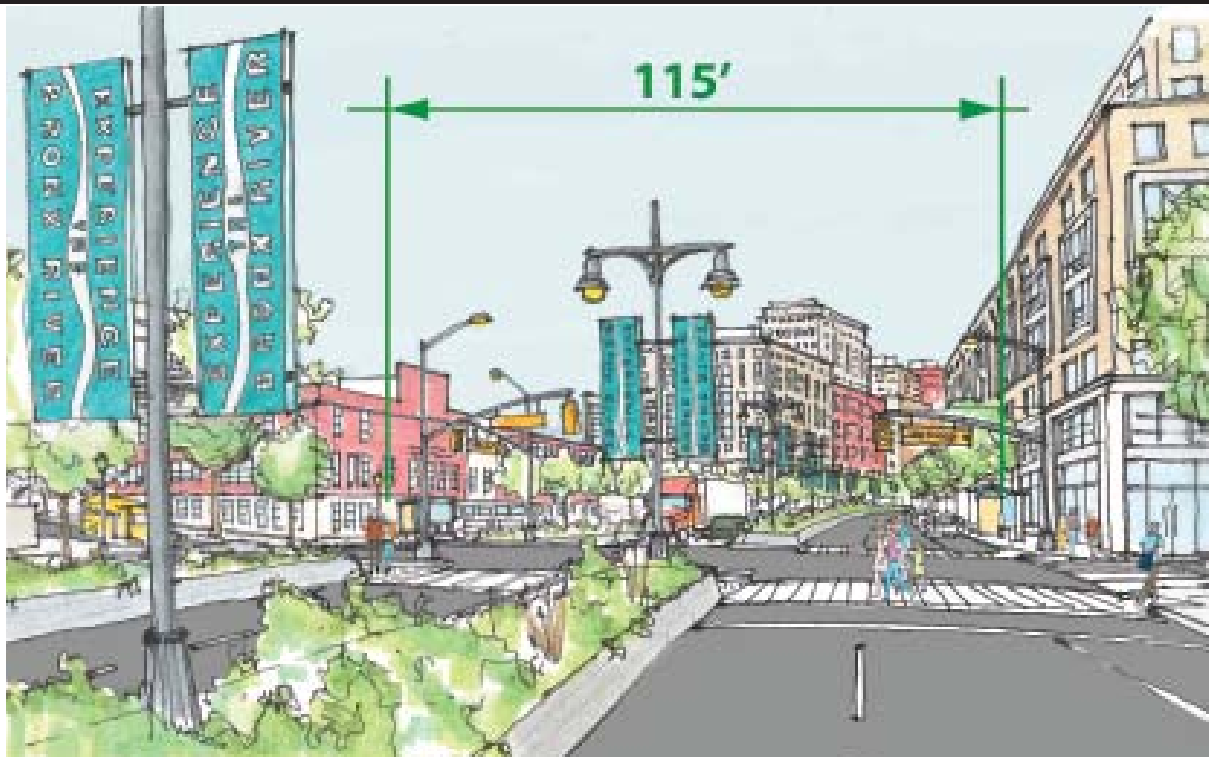
ROAD ± 115'

LAND ± 200'

WATER(front) ± 150'

Residential Zoning Sheridan Boulevard Mixed Use Zoning Shore Public Walkway / BX River Greenway

## Illustrative section of the Sheridan Expressway at-grade Right of Way looking north towards E 172nd Street



Proposed view of the Boulevard and signalized crossing at Jennings Street.



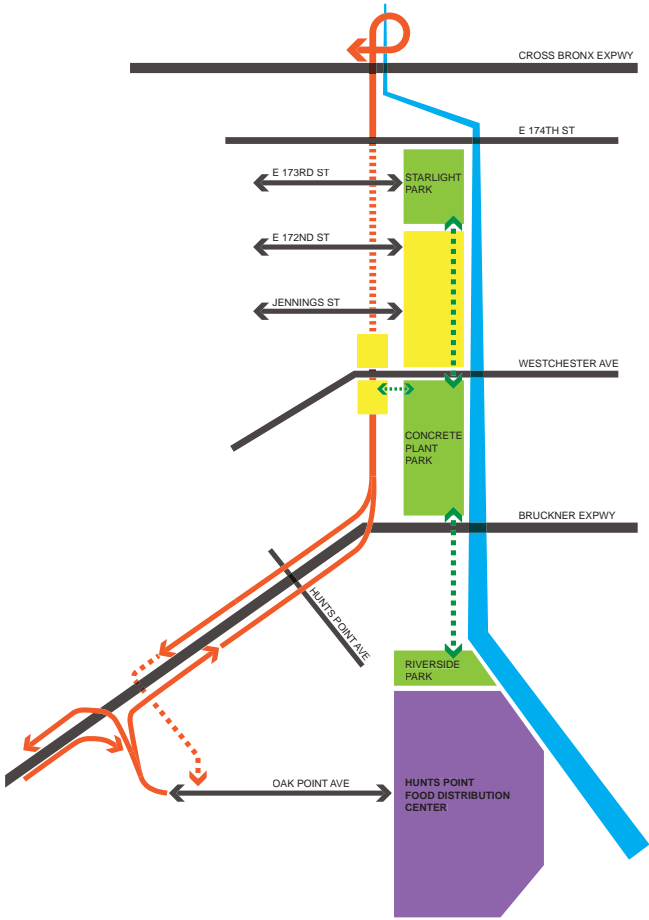
Existing view from the Sheridan Expressway northbound approaching Jennings.

- Move forward with zoning and land use analysis of key opportunity areas
- Conduct a full in depth economic/ cost benefit analysis of proposed development program
- Work with NYS DOT to begin identify steps required for implementation of infrastructure improvement projects
- Work with city agency partners and elected officials to complete a final design for the new roadway and implement changes to the at-grade Sheridan and
- For more information please visit: <http://www.nyc.gov/sehp>

# Reconnecting the Neighborhoods Around the Sheridan Expressway and Improving Access to Hunts Point

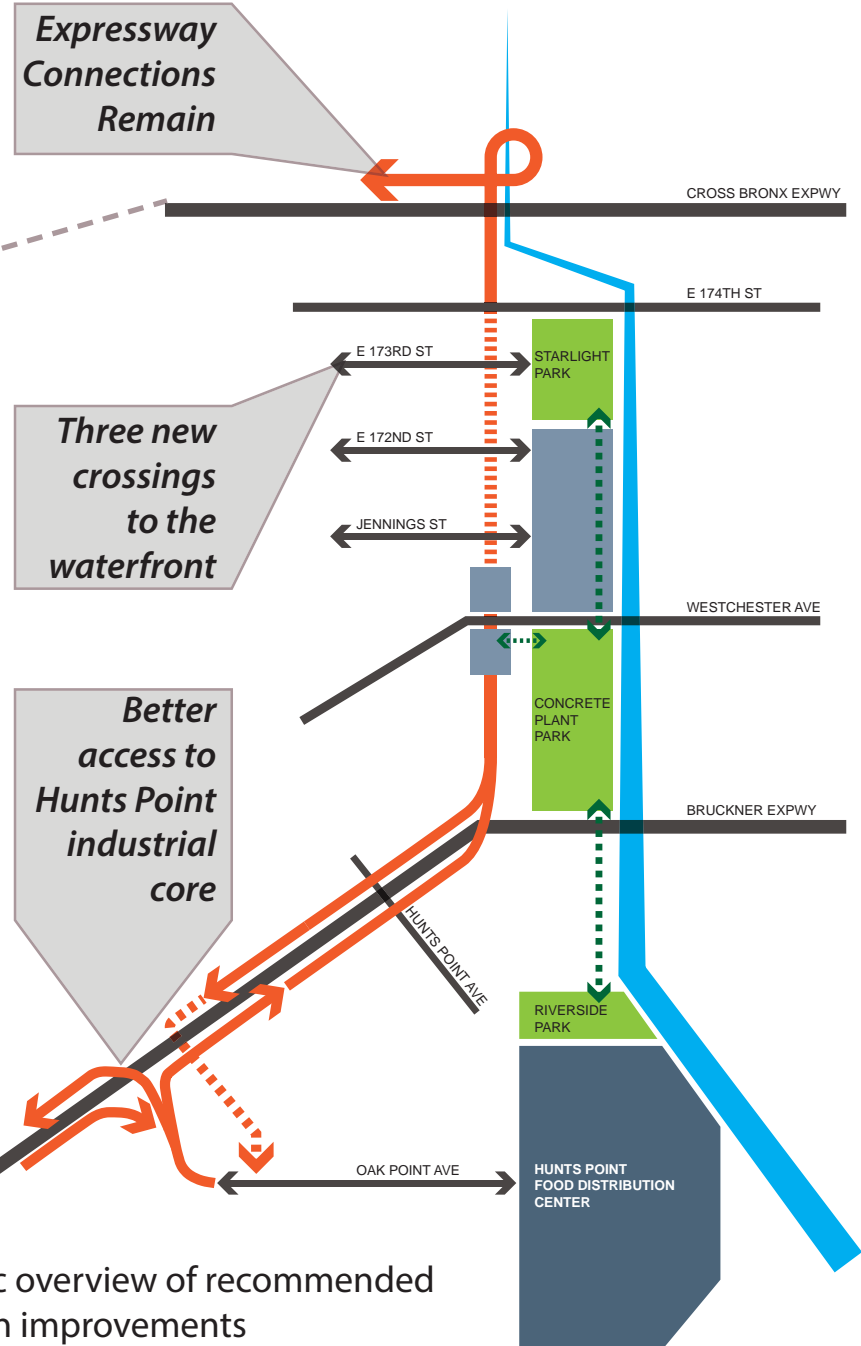


For more information please visit:  
<http://www.nyc.gov/sehp>



# Summary of Recommendations

The City's recommendations support decades of efforts to restore vitality to this section of the South Bronx.

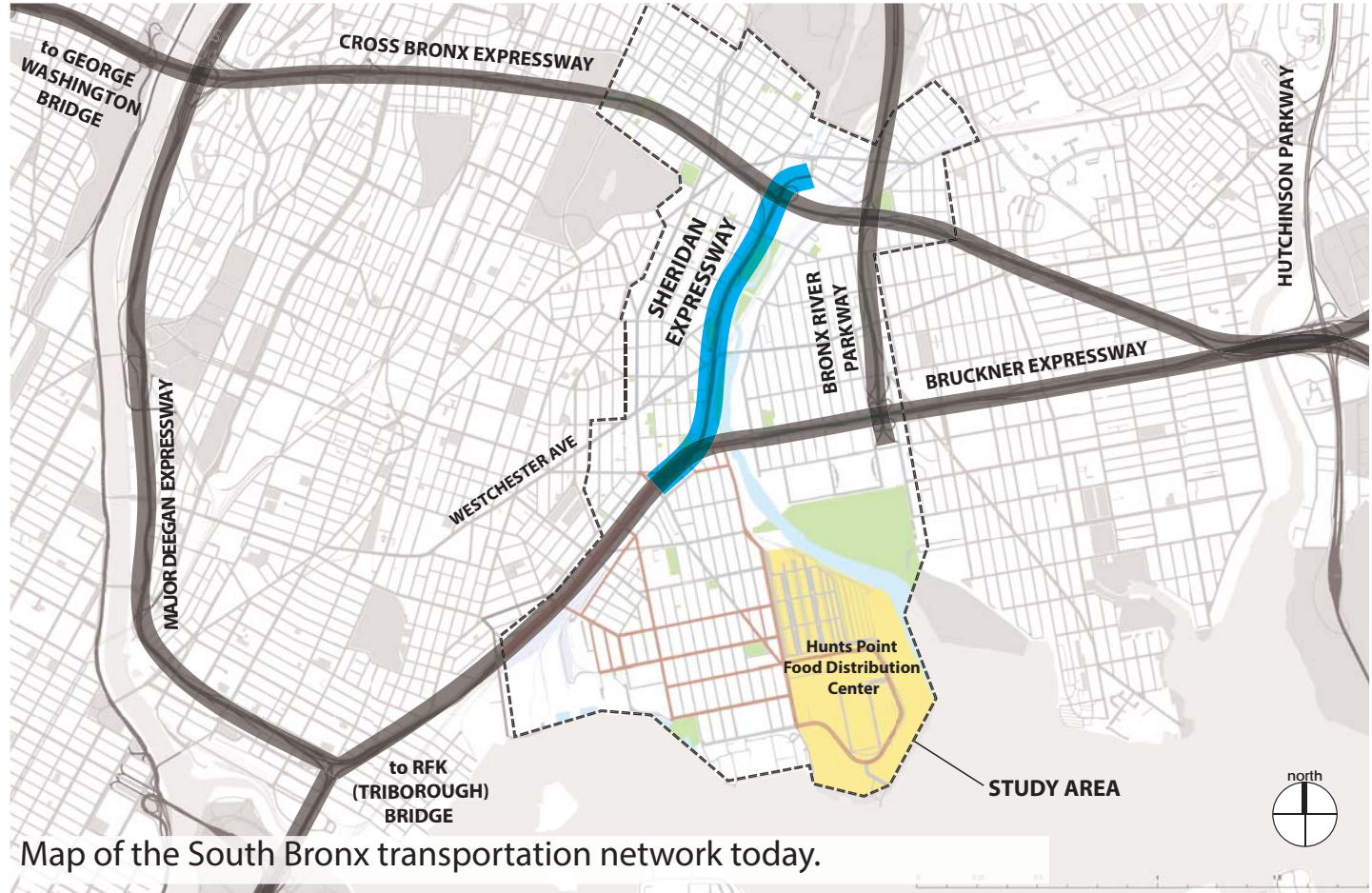


The Sheridan Expressway is located in the south Bronx

Diagrammatic overview of recommended transportation improvements



# The Sheridan Expressway Today



Map of the South Bronx transportation network today.

View of the Sheridan Expressway looking north. The southern entrance to Starlight Park is to the right.

