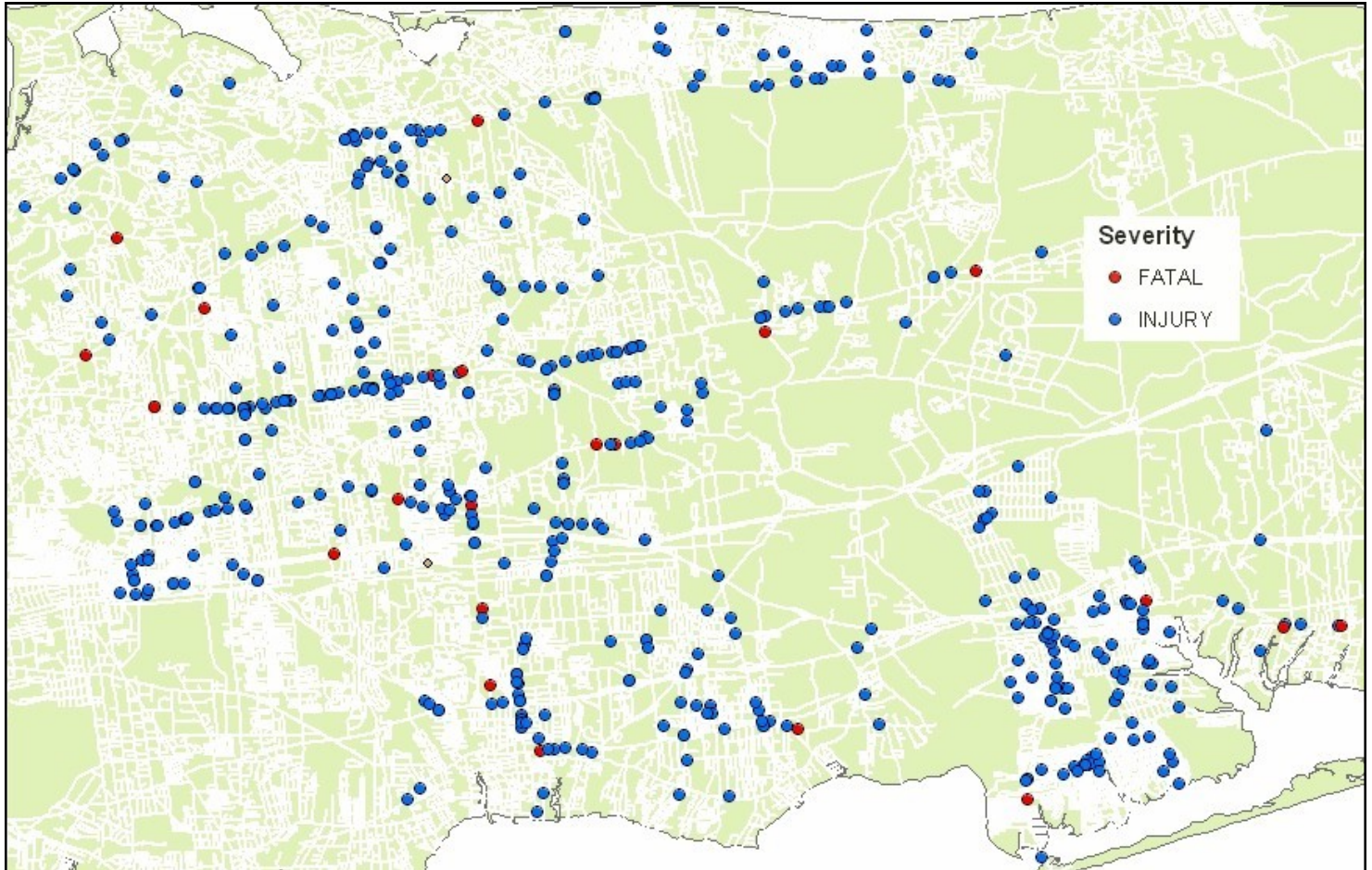


Pedestrian and Bicyclist Safety in

Brookhaven, Suffolk County



Pedestrian and Bicyclist Injuries and Fatalities by Road Jurisdiction, 2006-08

	<i>Town</i>	<i>County</i>	<i>State</i>	<i>Other/ Unknown</i>	<i>Total</i>
Fatalities	5	13	11	3	32
Injuries	262	91	140	108	601
Total Incidents	267	104	151	111	633
Percent of Total	42.2%	16.4%	23.9%	17.5%	

Source: Federal Highway Administration.